



Style DV3

GETTING STARTED

Thank you for purchasing the Mustek Style DV3 Multi-Functional Digital Video Camera.

We have included this convenient Getting Started guide to help with basic operations. For more details on the different functions and operations, please refer to the User Guide.

HOW TO CONTACT US

Website:
<http://www.mustek.com>
Customer Service:
(General Info)
Email: cservices@mustek.com
Fax: (949) 788-3670
Technical Support:
Email: tsupport@mustek.com
Phone: (949) 788-3600
Address:
15271 Barranca Parkway
Irvine, CA 92618

PACKAGE CONTENTS

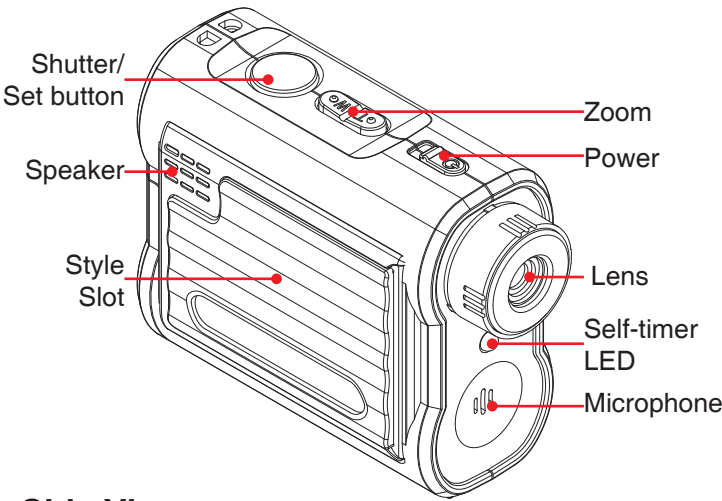
- Installation CD
- Video Studio CD
- User Guide
- Getting Started
- Strap
- Camera Bag
- USB Cable
- AV Cable
- AA Alkaline Battery x 2
- Style Panel x 4

ICONS & INDICATORS

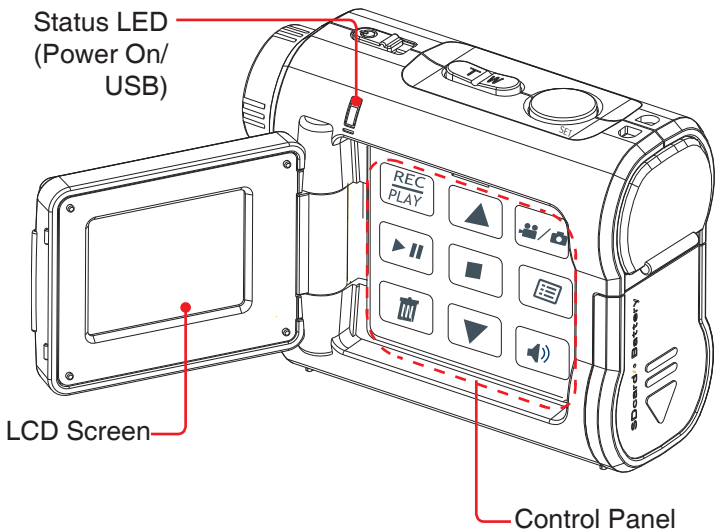
Resolution		Other	
	Fine		Self-Timer
	Normal		Nightshot
	Low		Battery Status
Camera Mode		System Setting	
	Camera		System Sound
	Video		Auto Shutdown
Card Status		System Setting	
	With Card		Format Card
	Card Lock		Video Output System
			Video Frequency

1 PRODUCT TOUR

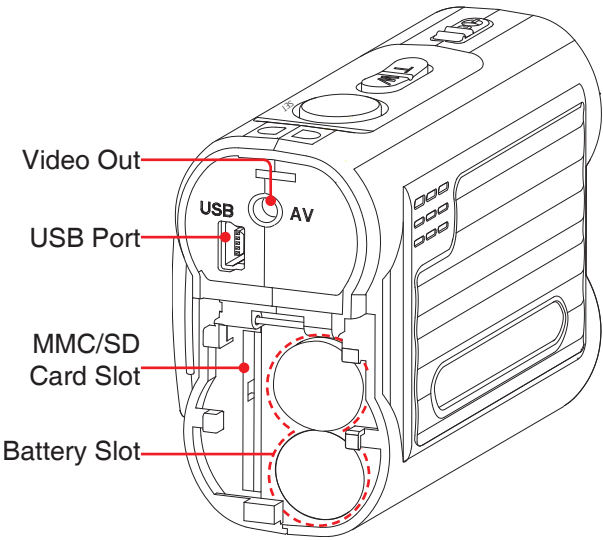
Front View



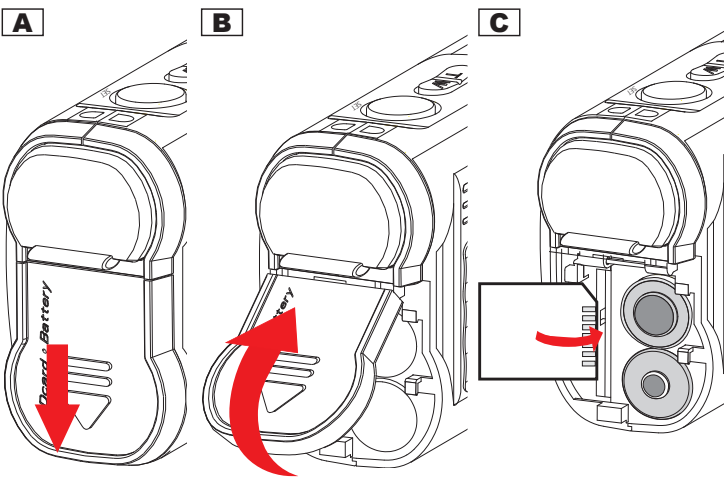
Side View



Back View



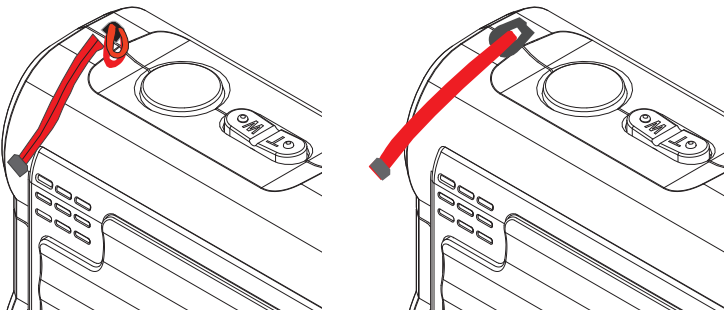
2 LOADING BATTERIES / MMC CARD



- A** Slide the Battery/SD/MMC cover in the direction of the arrow (down).
- B** Lift the Battery/SD/MMC cover up.
- C** Insert batteries into the battery slots. Insert the MMC memory card into the SD/MMC card slot.

Note: When the MMC memory card is correctly inserted, a "click" sound will be heard.

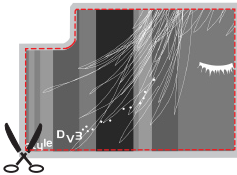
3 ATTACHING THE STRAP



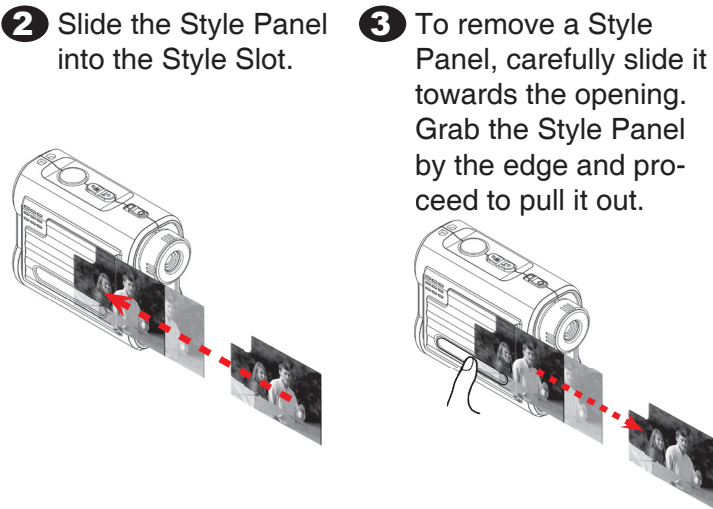
- A** Insert the thin end of the strap into the strap holder
- B** Pass the other end of the strap through the loop of thin cord and pull tight

4 INSERTING/REMOVING STYLE PANELS

- 1** Create a new Style Panel through *Panel Magic* and carefully cut it out along the inner borders.



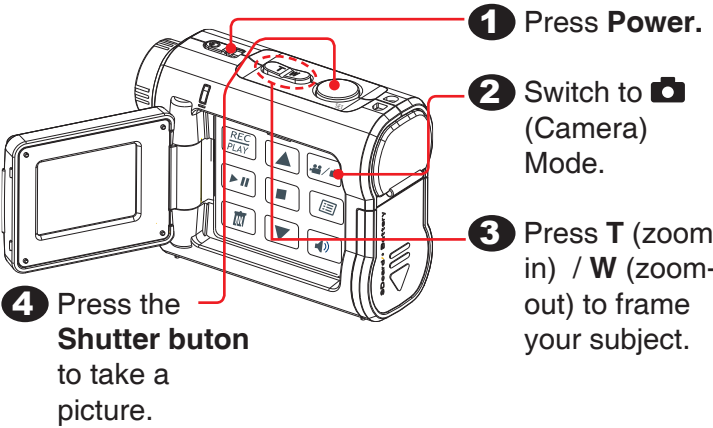
Note: Be sure to cut along the **inner borders** when cutting out the Style Panel otherwise it will not fit into the Style Slot.



Warning: Please **DO NOT** apply pressure to the panel slot. Excessive pressure will cause the frame to break.

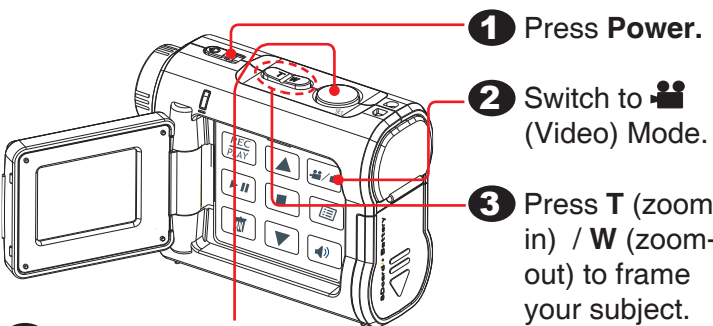
Caution: Frequent removal of the same Style Panel may cause ink loss and distort the Style Panel image.

5 TAKING PICTURES



- 4** Press the **Shutter button** to take a picture.

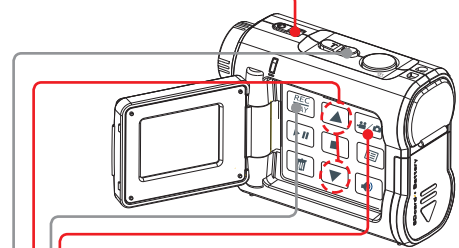
6 TAKING VIDEOS



- 4** Press the **Shutter button** to start recording. Press the **Shutter button** again to stop recording.

7 PLAYING BACK

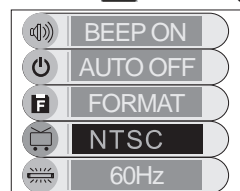
1. Power on the camera.



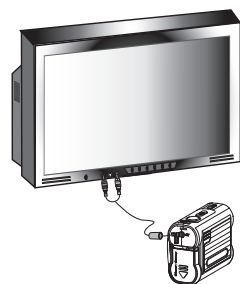
2. Set the camera to (Camera) mode to playback pictures or (Video) mode to playback videos.
 3. Press **REC/PLAY** to enter **Playback** mode.
 4. Press to review your pictures or videos.
- Press the **W** (zoom-out) button to switch to thumbnail format.

To playback on a TV set

1. Power on the camera.
2. Press to bring up the OSD menu.



3. Select **NTSC** or **PAL** from the OSD menu. NTSC for North America.
4. Connect the single-ended cable into the AV connector on your camera and the yellow connector into the VIDEO IN and the black connector into the AUDIO IN on your television set.

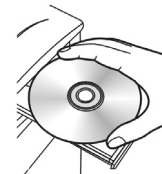


5. Turn on the TV.
6. Switch to the input source where your camera is connected on your TV set. (eg. Video 1, Video 2, etc.)
7. Set the camera to (Camera) mode to playback pictures or (Video) mode to playback videos.
8. Press **REC/PLAY** to enter **Playback** mode.
9. Press to review your pictures or videos.

8 CONNECTING TO COMPUTER

For PC

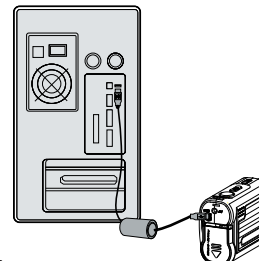
Driver Installation



1. Insert the installation CD into your CD-ROM drive.
2. Follow the on-screen instructions to complete the driver and bundled software installation.

Getting Connected to a Computer

1. Connect one end of the USB cable into the USB port of your computer and the other end into your camera.
2. Power on the camera.



For MAC

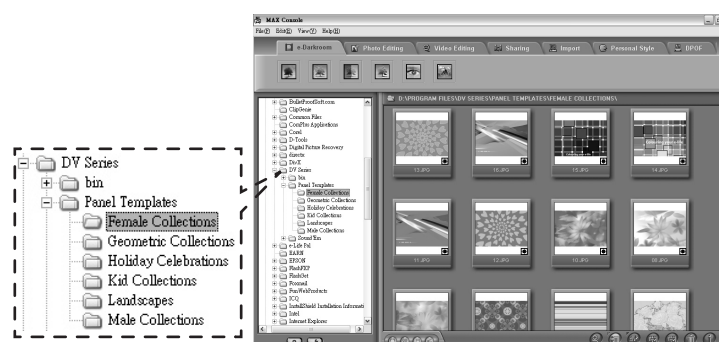
(Mac OS 9.x and 10.1 or above)

A Mass Storage drive will be detected when you connect the camera to a MAC. You can easily manipulate your files via the MAC user interface.

9 STORING TO COMPUTER

When the camera is connected to a computer, launch the **MAX Console** to transfer files from your camera to your computer.

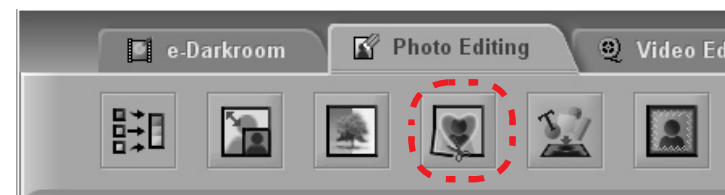
Note: Initial launch of **MAX Console** will bring you to the **Panel Templates** folder. It will save your location upon exit and go to the last opened folder upon next launch.



Select the source from the left menu and **Drag and Drop** files to your computer.

10 CREATING STYLE PANELS

1. Launch the **MAX Console** and select the image you wish to transform into a Style Panel.
2. Select "**Creative Cropping**" under the "**Photo Editing**" tab.



3. Select the Style Panel icon () under the "Custom" tab.

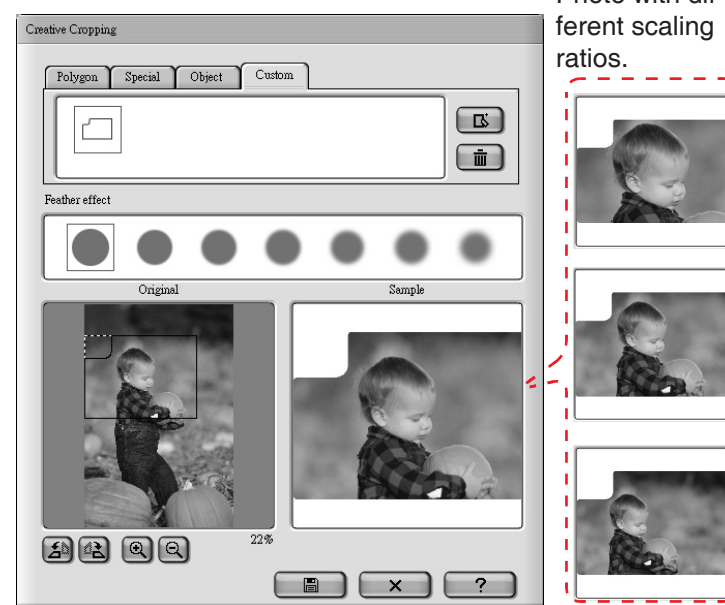


Photo with different scaling ratios.

Note: The style panel icon () appears on the preview window.

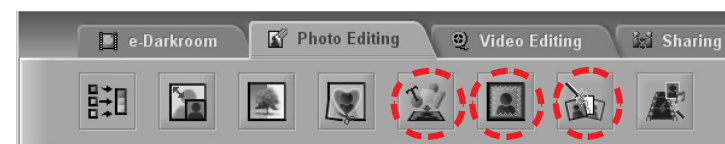
4. Adjust the panel borders in order to select the area you wish to print as a Style Panel.

Important: For best results, use proportional rescaling () to scale frame content.

5. Save the cropped picture as a new photo.

Note: The Style Panel icon () under the "Custom" tab can not be deleted.

6. You may also apply special effects to your images by utilizing **MAX Console** plugins such as *Photo Decoration*, *Digital Effect* and *Funny Photo Toy*. For more details on these features please refer to the built-in help .



11 PRINTING OUT STYLE PANEL

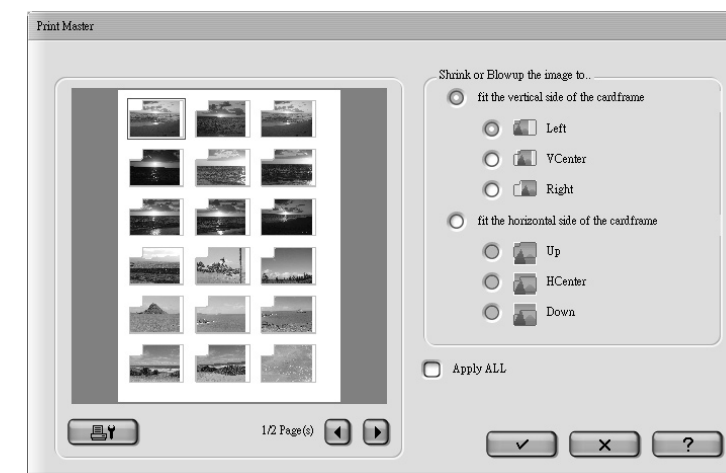
1. Select Style Panels or photos that you wish to print for your Style Slot and select "**Panel Magic**" under the "**Sharing**" tab.



Note1: For best results, crop your photos through "**Creative Cropping**" before attempting to print them via "**Panel Magic**". Otherwise, photos may appear off-scale.

Note2: For more Style Panel designs, please go to the "**Panel Template**" folder under the program installation path. You may print these template photos for Style Panel without cropping.

2. Selected photos will appear as thumbnails in the preview window. If the photo does not fill the Style Panel, use the settings on the right side to adjust its size.



Note: In order for the **Style Panel** to stay in the **Style Slot** securely be sure to use photo paper with at least 0.25mm of thickness for printing.

3. Press to set up your printer then press to print the photos.

The number of photos that fit on a sheet of photo paper will vary according to the paper orientation and size.

Paper size	Orientation	No. of photo per sheet
3 x 5	Portrait	2
3 x 5	Landscape	1
4 x 6	Portrait	3
4 x 6	Landscape	4
5 x 7	Portrait	3
5 x 7	Landscape	4
A4	Portrait	18
A4	Landscape	16